

Copying Data To Excel from PeakSimple

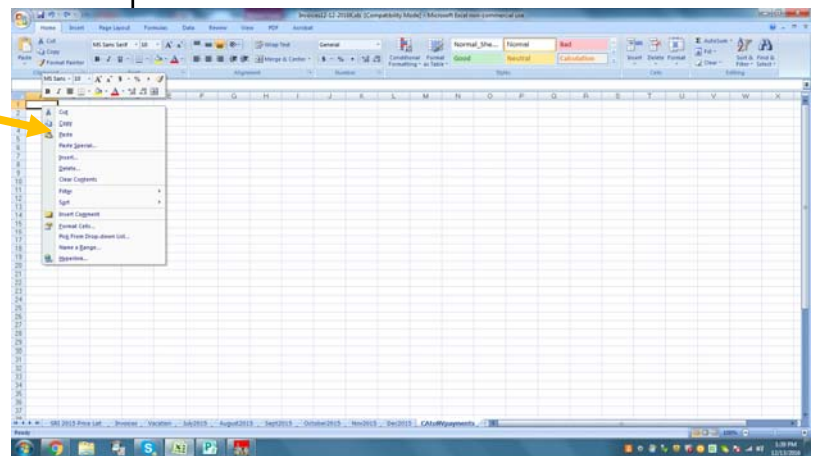
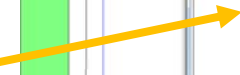
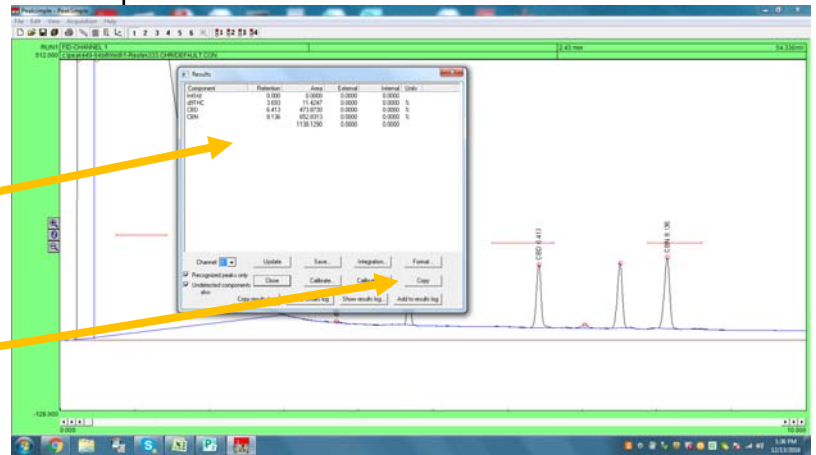
December 2016

The calculated results from the chromatogram on the screen are shown in tabular format in the View/Results screen.

Click the COPY button to copy the results table as a CSV (comma separated variable) file to the Windows clipboard.

From Excel, select a cell, right click and then left click PASTE.

The results table from PeakSimple appears in Excel.



Component	Retention	Area	External	Internal	Units
toluene	0	0	0	0	%
BTAC	3.885	11.4247	0	0	%
CSO	6.413	473.8713	0	0	%
CBN	8.136	862.8913	0	0	%



SRI Tech Support: 310-214-5092

www.srigc.com

Copying Data to Excel December 2016

Page 1

Copying Data To Excel from PeakSimple

December 2016

Sometimes you want to copy the results of more than one chromatogram into Excel.

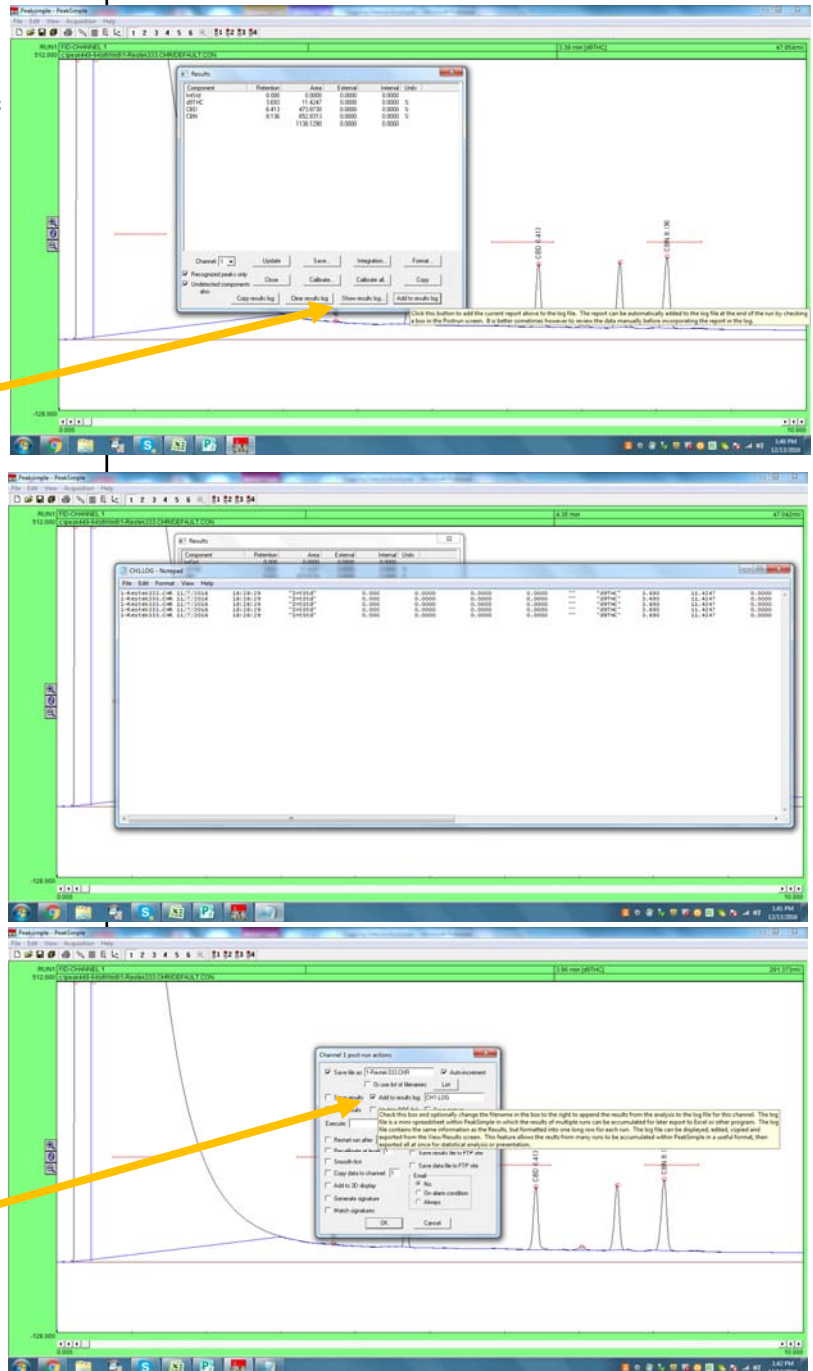
For example, you may be running a series of tests and want to get the results from all the tests into Excel.

Click the button in the Results screen labelled **SHOW RESULTS LOG**.

If there is already a **RESULTS LOG** it will look something like this. Each line in the results log has a time and date stamp plus the same information as in the results table, except the data is stretched out in one long line for each analysis. Ideally the peak information is perfectly lined up in columns as shown.

If there is not already a results log, then you can add the results table to the log by clicking the button labelled **ADD TO RESULTS LOG** also at the bottom of the Results screen.

The results from each analysis can be added to the results log automatically at the end of each run by checking the box in the **Postrun** screen labelled **ADD TO RESULTS LOG**. You can also define the name of the results log file. It defaults to CH1.log for channel 1.



SRI Tech Support: 310-214-5092

www.srigc.com

Copying Data to Excel December 2016

Page 2

Copying Data To Excel from PeakSimple

December 2016

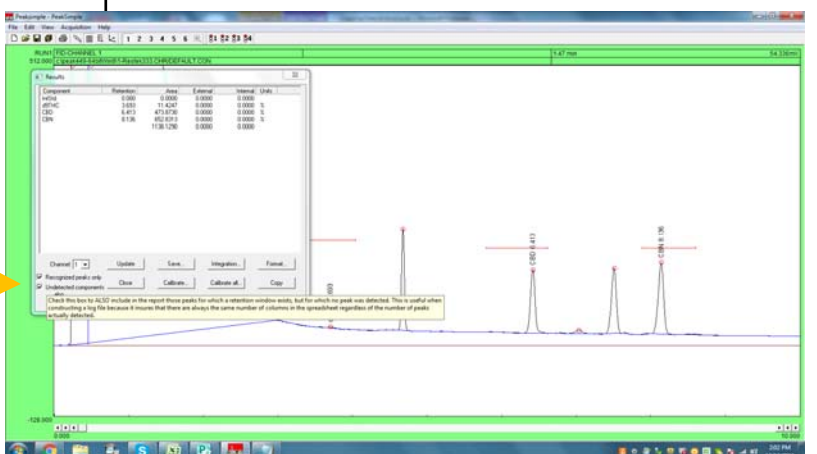
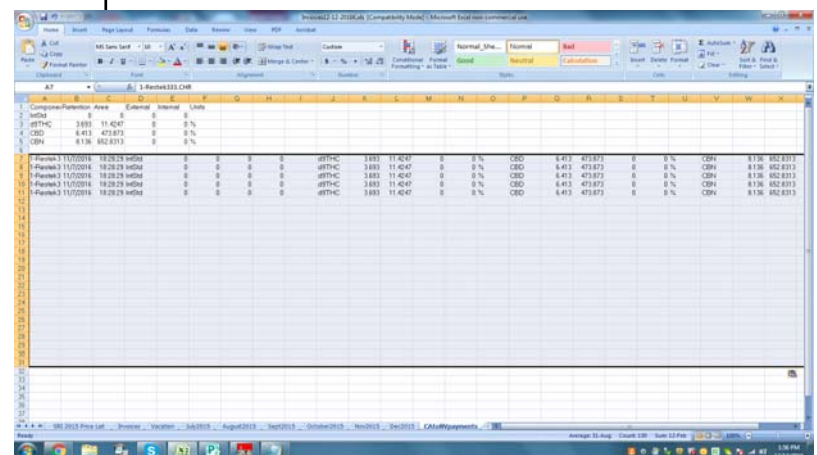
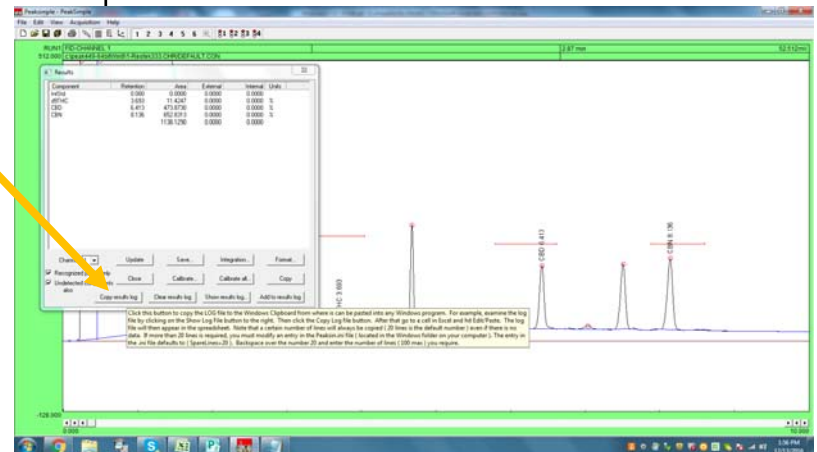
Click the button at the bottom of the Results screen labelled COPY RESULTS LOG.

This copies the entire results log to the Windows clipboard.

In Excel click Paste and the results log loads into Excel.

You can also Load the results log from Excel by clicking File/Open (in Excel) then navigating to the PeakSimple folder to load CH1.log or whatever the name of the log file is.

If the columns of numbers are not perfectly lined up, make sure the box in the results screen labelled UNDETECTED PEAKS ALSO is checked. This reserves a space in the log file for each peak even if it is not detected and has zero area.



SRI Tech Support: 310-214-5092

www.srigc.com

Copying Data to Excel December 2016

Page 3